

# Instructions for 3D Christmas Box Snowman



Follow these simple instructions to make your own snowman model.

## You will need:

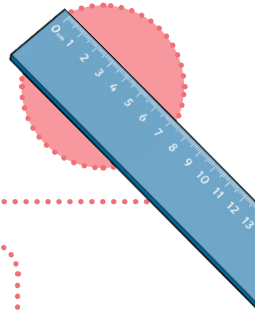
a pair of scissors



glue



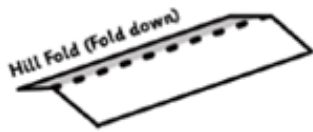
a ruler (optional)



## Instructions:

1. First, cut out the three templates. They will become cubes that sit on top of each other, like in the picture.
2. Now, fold all of the dotted lines on each template. All of the dotted lines fold **down** (a hill fold). Use a ruler to help you keep a straight edge.

## Follow this diagram:



## How to Make the Cubes:

3. Take the largest template with the four buttons. This will become the snowman's body.
4. Add glue to tab 1 and stick it to the side next to it.
5. Glue tab 2 to the other side.
6. Next, add glue to tabs 3 and 4 and fold down this face of the cube. Hold the tabs until they have dried.
7. Add glue to tabs 5, 6 and 7 and then fold down the last face of the cube. Tuck tab 7 inside to finish the cube shape.
8. Now, **repeat steps 4 to 7 with the other two cubes.**

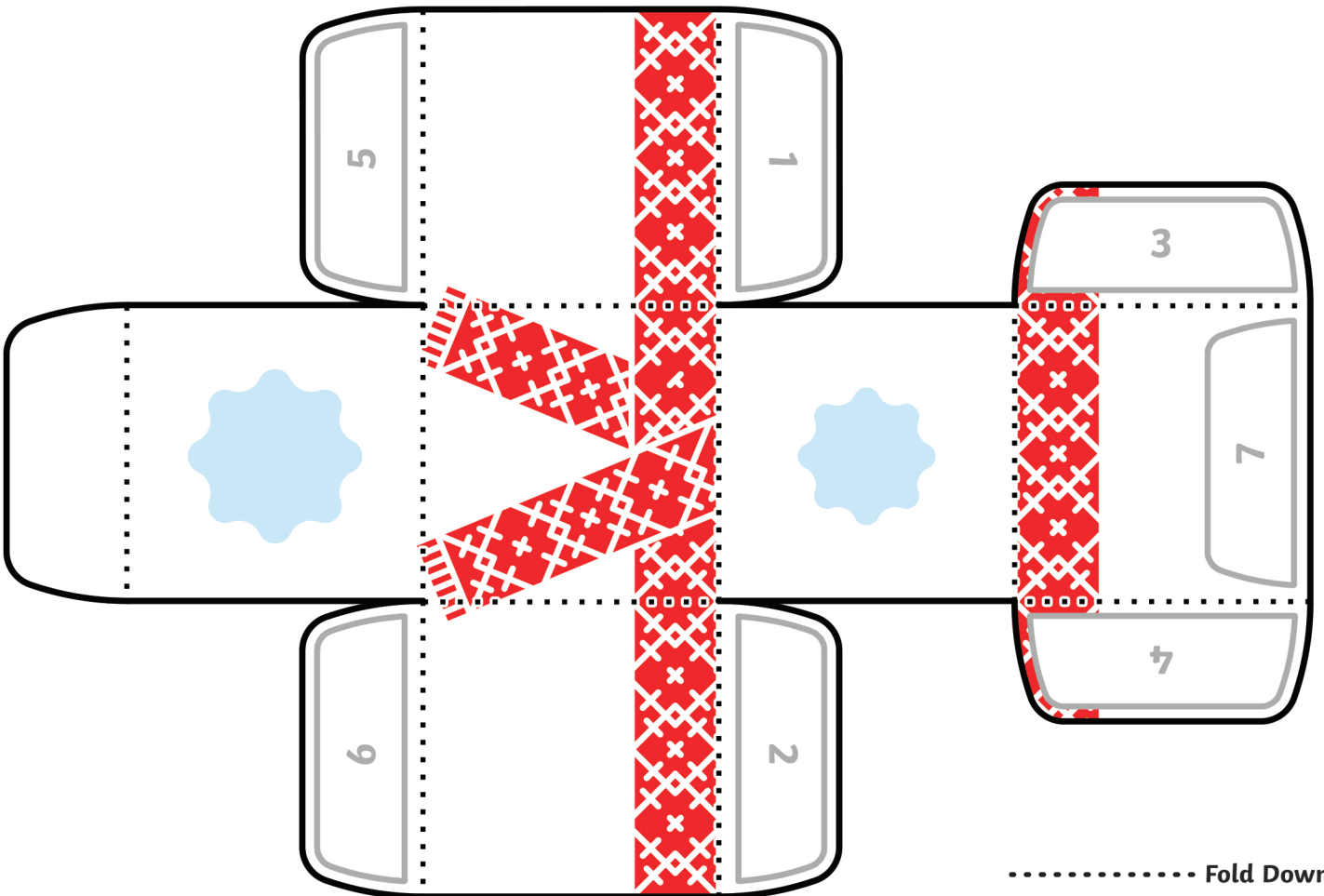
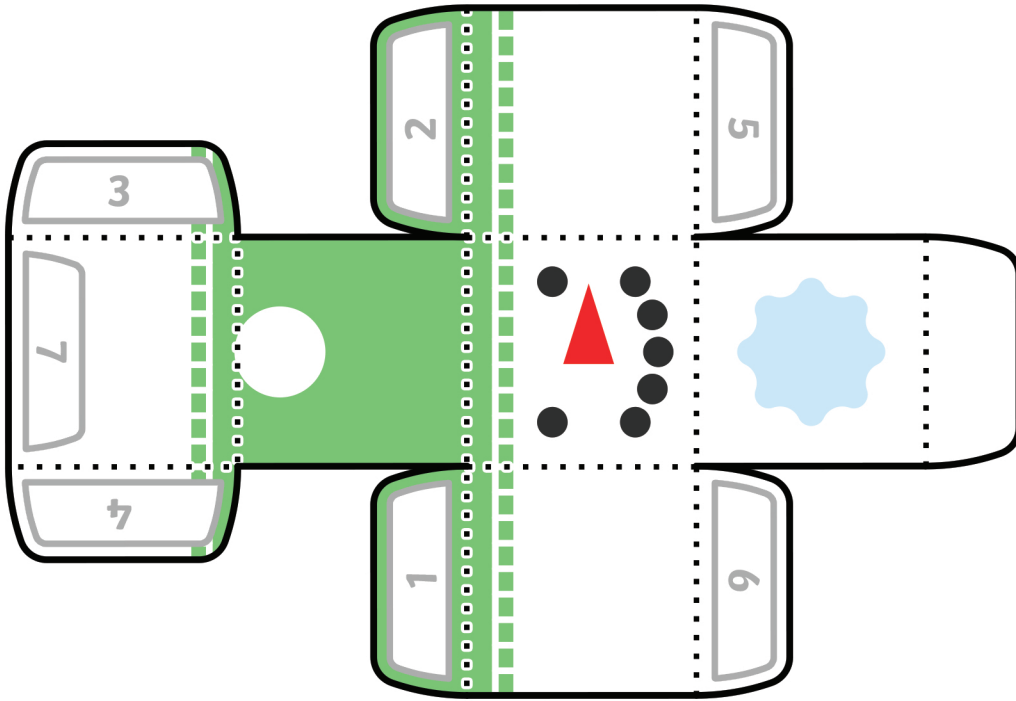
## How to Assemble Your Snowman:

9. First, put the biggest cube at the bottom, then glue the cube with the scarf on top (see picture). Glue the snowman's head on top of the middle cube.

You have finished your snowman model!



# 3D Christmas Box Snowman



..... Fold Down  
- - - - - Fold Up

# 3D Christmas Box Snowman

..... Fold Down  
- - - - - Fold Up

